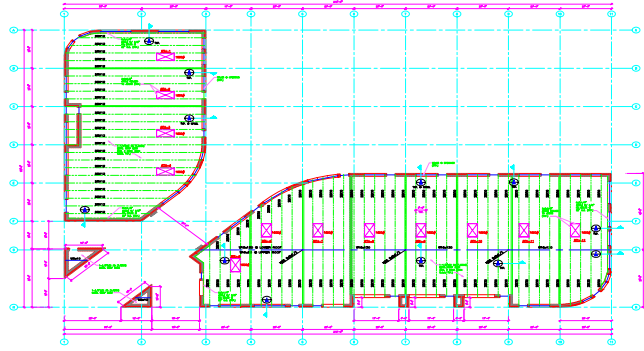


COMMERCIAL PROJECT EXAMPLE



Project Name: **HESLIP'S CORNER**

Structure Use: Strip Mall
(Light Commercial)

Project Address: 7 Mile Road & Napier
Northville, Michigan

Architect: The Foresta Group, P.C.
32233 Schoolcraft Road
Suite 100
Livonia, MI 48150

Contact: Mr. Chris Biggers
Tel: (248) 471 – 2900
Fax: (734) 293 - 2901

PROJECT DESCRIPTION

The Heslip's Corner is a proposed light commercial structure of approximately 35,000 square feet in area in an 'L' shaped structure at the corner of Seven Mile Road and Napier Road of Northville, Michigan.

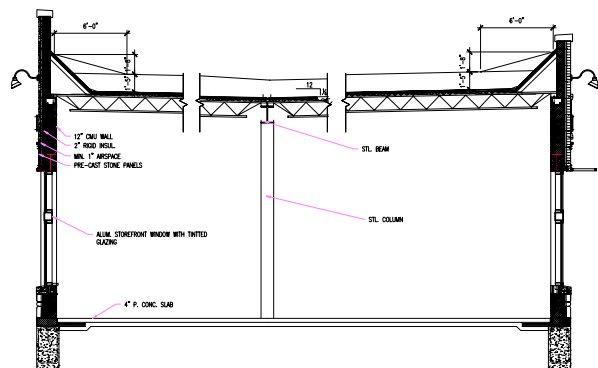
SAM was contacted by the Architect to provide structural engineering, design and drafting services to this proposed structure in late September 2005. The ARCHITECT has indicated to SAM that the structural engineering portion shall be completed by the 3rd week of October 2005 as the owner wishes to complete below grade construction before the winter of 2006.

SAM immediately prepared a proposal and submitted to the ARCHITECT, the next day. Within two days,

the ARCHITECT approved SAM's proposal to proceed with the Design.

DESIGN

SAM obtained the electronic drawings from the ARCHITECT and proceeded with design. While proceeding with the design, SAM maintained project communications with the ARCHITECT's project manager to incorporate any design and layout changes. A File Transfer Protocol (ftp) account was created for this project and access was given to the ARCHITECT hence he can review the project progress on a weekly basis. SAM completed the entire structural analysis and design with an electronic calculation package in less than three weeks for a Fee of \$7,000.



SAM Consultants, PLLC
Structural ♦ Environmental ♦ Project Management

P.O. Box 1153
Walled Lake, MI 48390-1153
Tel: (248) 961-0273
Fax: (248) 624-6231